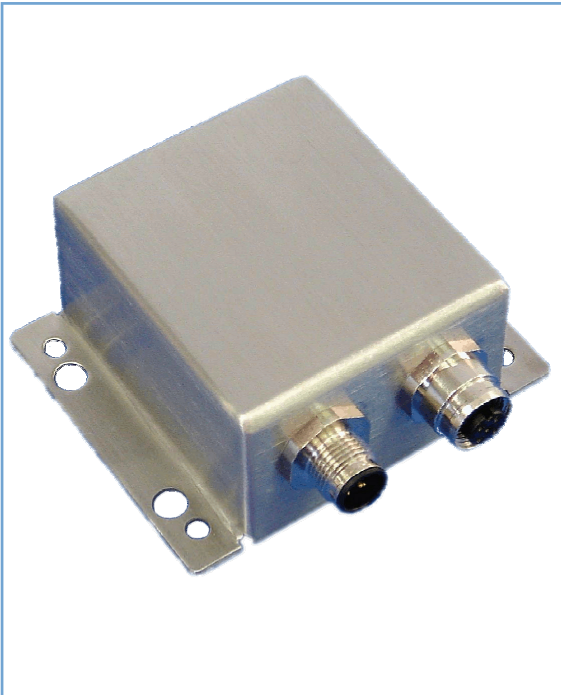


CANopen Inclinometer

XY-CAN-E is a two-axis inclinometer sensor with CANopen protocol. The sensor can be used for measuring the tilt and swing angle of any object with respect to gravity. It can also simultaneously operate as a 360° sensor. Inclination measuring is based on the high accuracy accelerometer IC.



- Two-axis measuring for XY inclination
- Precise measuring range $\pm 60^\circ$, Measures inclination up to $\pm 90^\circ$
- The cover upwards or downwards at XY null position
- Precise measuring range $\pm 180^\circ$
- Sensor measures a full 360° of orientation at the same time
- Rotation axis towards the cover
- Connectors downwards at null position
- Accuracy better than $\pm 0.3^\circ$, typically below $\pm 0.15^\circ$
- Actual reading resolution up to 0.04°
- Temperature compensated measuring
- Filtered measuring, adjustable time constant $\sim 0.5s \dots \sim 2.1s$
- Nearly immune to vibration
- Two M12 connectors for CAN-bus IN/OUT
- Standard CANopen connector pin-out on request
- CAN-bus interface (ISO11898) Baudrate up to 1Mbit/s
- CANopen according to CiA DS 301 V4.02
- Inclinometer device profile DSP 410 V1.1
- Supports Layer Setting Services DSP 305 V2.0
- Operating voltage 9...30V DC
- Operating temperature range $-35^\circ C \dots +70^\circ C$
- Weight $\sim 330g$
- Protection class IP 67