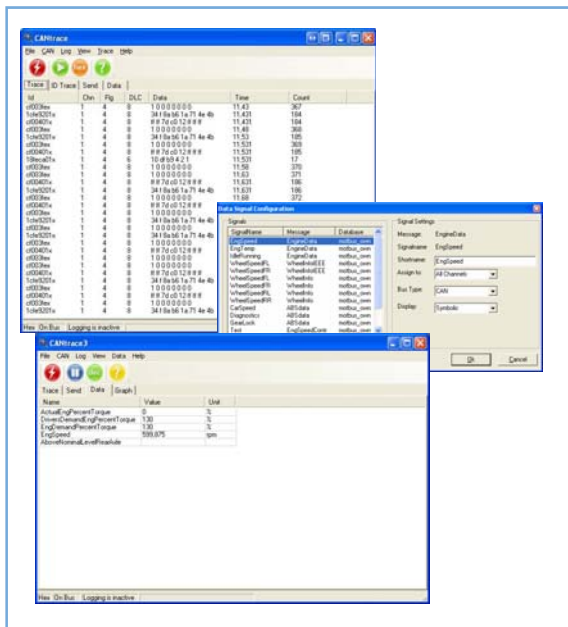


CANtrace

TK Engineering CANtrace is an advanced but easy to use CAN monitoring tool, which uses CASTORfamily or any Kvaser, Softing or Vector CAN interface as interface to the CAN-bus. CANtrace provides easy configuration for tracing (listing), Graphical presentation of signals, sending messages to CAN-bus and logging functions. CANtrace also offers time stamping of all messages.



- Trace, Fixed Trace, Sending of messages
- Logging Functions
- Works with 11 and 29 bit identifiers
- Works with bus-speeds up to 1 Mbit/s
- Supports Castor, Kvaser, Softing and Vector hardware
- Easy setup
- Database support
- Data Window using Database(s)
- Graph Window using Database(s)
- J1939 support
- Bus statistics (busload, peakload, nr. of frames etc...)
- Replay-function

CANtrace works with both 11 and 29 bit identifiers. In the Trace window the user can see CAN-id, Data Length, Data and timestamp for the messages. The user can choose to fix the trace window (message on the screen with same id will be updated) or view all messages chronologically. CANtrace works with bus-speeds up to 1 Mbit/s. CANtrace works on all Windows-environments and in any PC with a serial or USB port. CANtrace supports all interfaces in the Castor-family, as well as any Kvaser, Softing or Vector hardware, others on request.

CANtrace can display signals also graphically by using the Graph-window. Using database-connection (DBC) the user has a possibility to show signals in graph-format. The graphs can also be cut and pasted to reports done e.g. In Microsoft MS-Office.

New added function is the Replay-function. This means that log-file(s) made by CANtrace can be re-played off-line. Useful when analyzing messages/signals afterwards.

